

METROPOLIS NEWS

www.klmetropolitan.com

大都会季刊

ISSUE 44 期



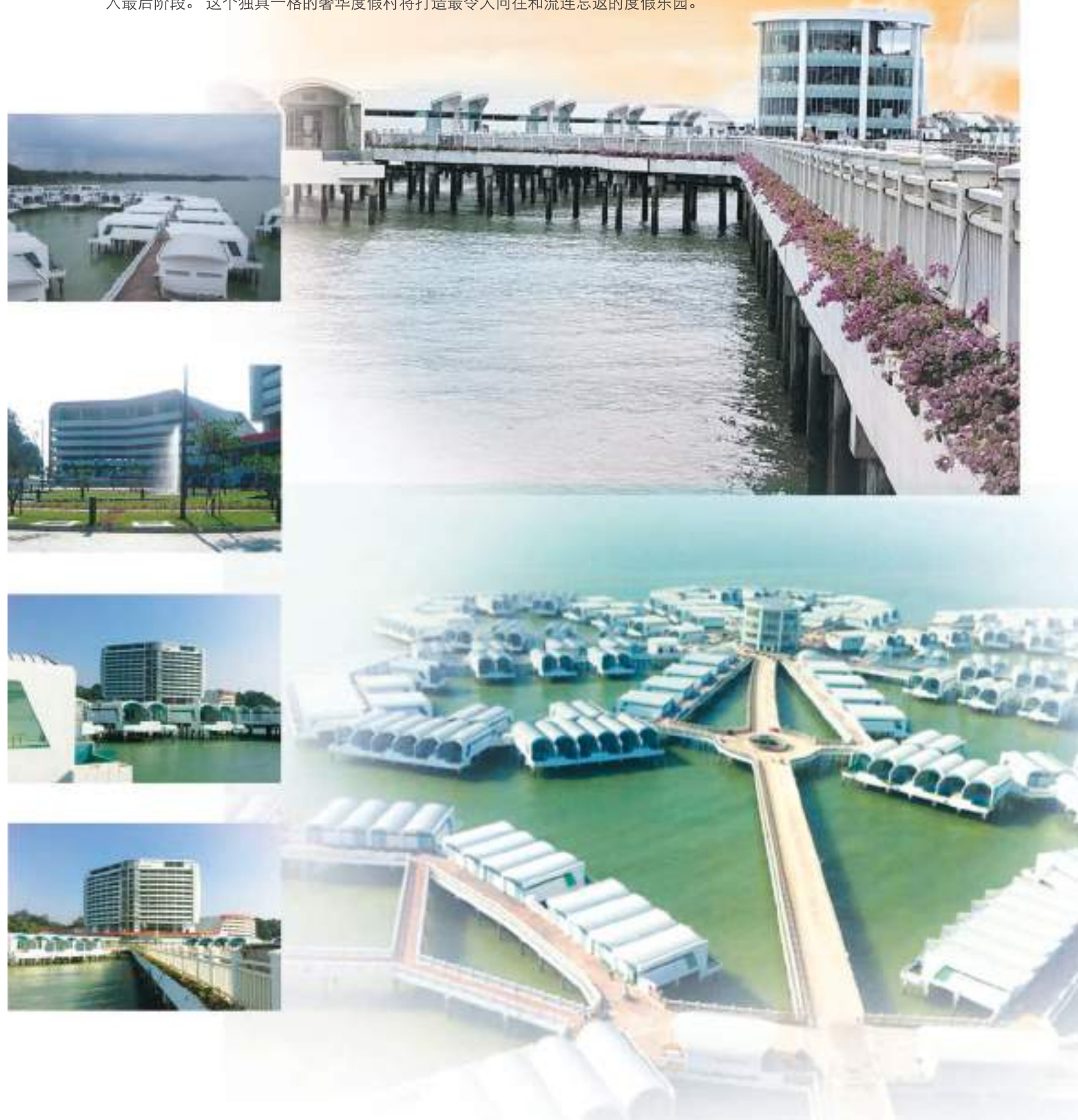
Lexis Hibiscus : A Floral Vision of Tropical Paradise
...where exhilaration and tranquillity thrive in blissful harmony

Lexis Hibiscus : 惊艳绽放, 热带桃源... 打造无限舒畅惬意、祥和安宁的意境

Emerging like a scenic launch pad into the sparkling blue waters of Port Dickson, Lexis Hibiscus is coming down to its final stage of construction for both the sea villas and the tower block. Truly a class of its own, it will definitely set itself apart as the most desired vacationing paradise to capture the very essence of indulgence once completed.

Hibiscus
On The Go

屹立在波德申波光粼粼碧水上的 Lexis Hibiscus 的海上别墅及酒店大楼的建筑工程已进入最后阶段。这个独具一格的奢华度假村将打造最令人向往和流连忘返的度假乐园。



Hibiscus
On The Go

Nearing Completion !

The Lexis Hibiscus is blossoming into its last stage of interior renovation works.

即将建竣！

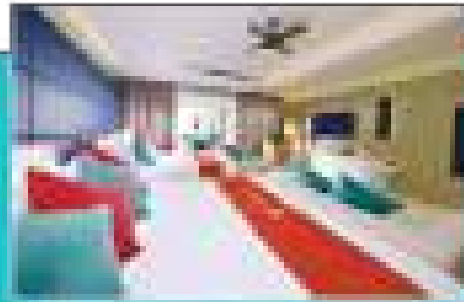
Lexis Hibiscus 内部装修工程已接近尾声。



Some final touch up is underway to ensure elegant and quality finishes.

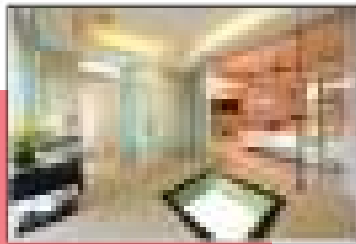
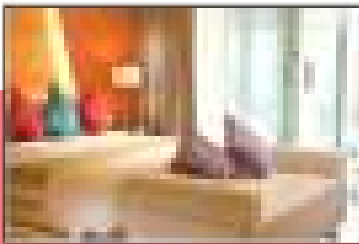
一丝不苟的高档修饰
营造优雅、高贵的气派





Type
A

EXECUTIVE
POOL VILLAS



Type
B

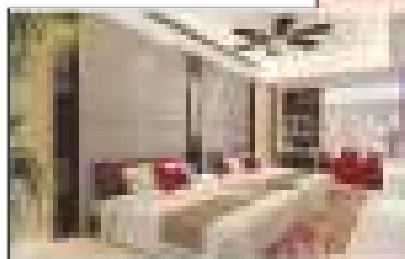
PREMIUM
POOL VILLAS



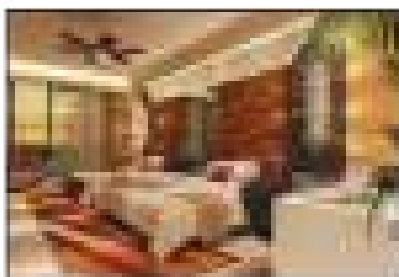
To truly reflect the sterling brand of its operator Lexis Hotel Group, Hibiscus is renamed to Lexis Hibiscus for better identification and correlation with other Lexis water homes.

Type
C

PANORAMA
POOL VILLAS



为了彰显运营商 Lexis 酒店集团超卓的品牌和配合其他 Lexis 海上别墅的形象，Hibiscus 易名 Lexis Hibiscus。





EXISTING NAME	NEW NAME	NO. OF ROOM	COMPLETION
THE HIBISCUS	LEXIS HIBISCUS		
TYPE A	EXECUTIVE POOL VILLAS	108	FEB 2015
TYPE B	PREMIUM POOL VILLAS	292	FEB - APR 2015*
TYPE C1	PANORAMA POOL VILLAS	60	JUN 2015
TYPE C2	PANORAMA POOL VILLAS	54	JUN 2015
TYPE D	IMPERIAL SUITES	6	JUN 2015
TYPE E	PRESIDENTIAL SUITES	2	JUN 2015
TYPE Y	SKY POOL VILLAS	114	JUN 2015
TYPE Y (VIP)	ROYAL POOL VILLAS	3	JUN 2015
GRAND TOTAL		639	

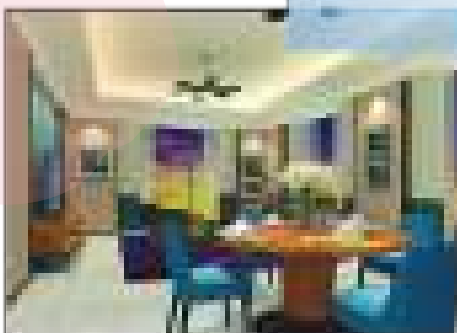
The Lexis Hibiscus offer luxury from the contemporary chic design, featuring spacious living, quality beddings, modern furniture and fixtures completed to the highest standard in each villa of different types.

* Type B (Unit no 109 - 218 , 341 - 400) completion in FEB 2015
 * Type B (Unit no 219 - 340) completion in APR 2015

The Embodiment of Extravagance and Elegance

Type
Y

SKY POOL VILLAS



Type
D

IMPERIAL SUITES

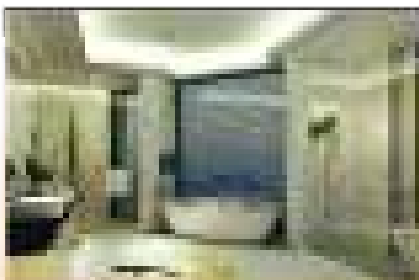




Lexis Hibiscus 各种款式别墅 设计时尚、现代化、居住空间宽敞、调配高档床具、顶级时髦家具和设备， 洋溢华丽豪华的气息。

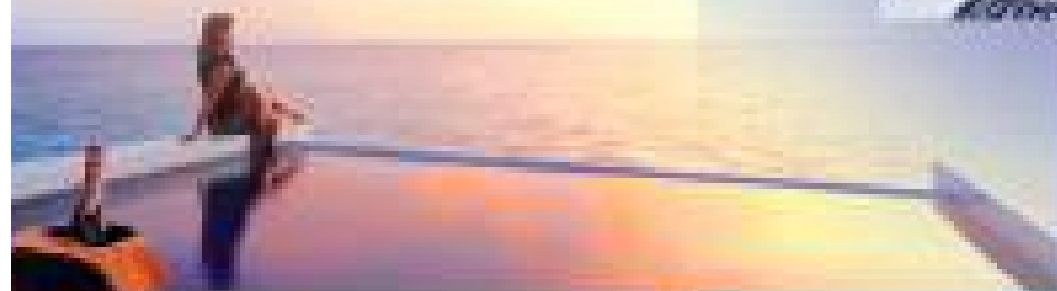
Type
Y
(VIP)

ROYAL SUITE



Type
E

PRESIDENTIAL SUITE



This new edifice is near completion with building structure visibly erected up to the roof level.



A Luminous Gem on the Beach Front

犹如沙滩上的璀璨明珠—这个新的地标性建筑即将建竣，建筑结构已达到屋顶层。



此大型房屋项目的建筑工程正紧锣密鼓地进行，工地上的工人和重型机械穿梭不息。

Teeming with hard hats and heavy equipment, the construction is moving fast at the site of this massive housing project.



The major wave of structure work at the Desa Mas construction site is progressing well on schedule and on track.

A trusted brand name of excellence : KL Metro Group — the multiple award winning company

吉隆坡都市集团 - 以卓越著称的可信赖品牌和屡获殊荣的公司



6th Asia Pacific International Honesty Enterprise Keris Award 2007
第6届亚太国际忠诚企业克里斯奖 (吉隆坡) 2007



CNBC's International Property Awards (London) 2007
CNBC 国际物业奖 (伦敦) 2007



3rd Malaysia Business of The Year Award 2008
第3届马来西亚年度企业奖 (吉隆坡) 2008



Bloomberg's Commercial Property Awards (Hong Kong) 2010
彭博社电视台亚太商业物业奖 (香港) 2010



Century International Quality Gold ERA (Geneva) 2011
世纪国际质量金时代奖 (日内瓦) 2011



Tripadvisor Award M.A., USA 2012
Tripadvisor 游客评估奖 2012 M.A. 美国



2012: Grand Lexis Most Number of Swimming Pool in a Resort
2012 年 Grand Lexis «设有最多泳池的度假村»



5 Star Hotel Certification By Ministry of Tourism Malaysia
马来西亚旅游部5星酒店证书 (2013)



Asia Pacific Property Award (Kuala Lumpur) 2013
2013 年亚太物业奖 (吉隆坡) 2013



Star Leadership Quality Award (Paris) 2013
2013 年明星领袖质量奖 (巴黎) 2013



Quality Summit Award (New York) 2014
2014 年明星领袖质量奖 (纽约) 2014

KL Metro Group — Building The Future : in association with a strong team of international consultants and advisors

吉隆坡都市集团与阵容强大的国际咨询和顾问携手打造美好未来

Developer 发展商



吉隆坡都市集团
Kuala Lumpur Metro Group
Level 15, Pavilion Tower
75 Jln Raja Chulan, 50200
Kuala Lumpur, Malaysia
www.klmetropolitan.com

Design Architect 设计建筑师



伦敦 宝麦蓝
Broadway Malyan, Riverside House
Southwark Bridge Road
London SE1 9HA

Marketing Consultants 营销咨询



環球置產集團有限公司
Global Asset Group LTD
2309B, 23/F Island Place Tower
510 Kings Road North Point
Hong Kong

Operator 运营商



丽升酒店集团
Lot 11-3, Level 11, Menara Melinium
8 Jalan Damanlela, Pusat Bandar Damansara
Bukit Damansara, 50490
Kuala Lumpur, Malaysia

I.D. Consultants 室内设计咨询



上海优地空间设计有限公司
UD & A Consultant
No. 211, Room 1707 Block 2
Wen Ding Road, 200030
Shanghai, China

Singapore Agent 新加坡代表



ERA Realty Network Pte Ltd
743 Lorong 5, Toa Payoh
Hersing Hub, 319457
Singapore



Real Estate & Housing Developers' Association Malaysia - REHDA
(Reg. No. HDA 2200NS 0125 / 04)

马来西亚实业及房屋发展商协会 - REHDA
(注册号码: HDA2200NS 0125/04)



Malaysia Association of Hotels
(Reg. No. NS / 0626 / 09)

马来西亚酒店公会
(注册号码: NS/0626/09)



Malaysia Association of Hotel Owners
(Reg. No. OM / 2012 / 80 - B)

马来西亚酒店业主公会
(注册号码: OM/2012/80-B)



Malaysian Association of Tour & Travel Agents
(Reg. No. MA / 4118)

马来西亚旅行社协会
(注册号码: MA/4118)



Pacific Asia Travel Association
(Reg. No. HTL / 427 / 12 - 03)

亚太旅游协会
(注册号码: HTL/427/12-03)

Please visit us at : www.klmetropolitan.com (Developer Website)
www.lexispd.com / www.grandlexispd.com (Resort Website)