

KUALA LUMPUR METRO GROUP

Quarterly Circular

ISSUE 25

Jan - Mar 2010



THE LEGEND INTERNATIONAL WATER HOMES PHASA II , THE HIBISCUS GARDEN CHALETS

Developer
KI METRO™

Kuala Lumpur Metro Development Sdn. Bhd. (622637-K)
(a member of Kuala Lumpur Metro Group)

The
Legend
International Water Homes

Make this excellent investment your perfect choice today !



Exquisitely designed and furnished with the touch of luxury and meticulous craftsmanship, featuring a Balinese-style of living at its best !



Exterior : Artist Perspective



Interior : Bedroom

Investment with the best ever rental return
Great capital appreciation potential

8%
rental return
per annum



Each unit has a cozy living area open into a private swimming pool and landscaped indoor garden for relaxation and intimacy



Interior : Bathroom



Interior : Bathroom

Task Name	Duration	2010												
		Jan	Feb	Mac	Apr	May	June	July	Aug	Sept	Oct	Nov	Dec	
Tender	2 mths													
Piling Works	2 mths													
Building works														
(i) Fondation	2 mths													
(ii) Framing	3 mths													
(iii) Brickwork	4 mths													
(iv) Plastering	5 mths													
I. D. Works														
(i) Wall & floor finishes	5 mths													
(ii) Ceiling finishes	5 mths													
(iii) Mill works	5 mths													
(iv) Loose items	3 mths													
Landscape	2 mths													
Certificate of Fitness for Occupation	2 mths													

and our team . . .

CONTRACT EXPIRES

Architect



EDA Architects
No. 11 - 1, Plaza Danau Desa Dua, Jalan 2/109F,
Taman Danau Desa, 58100 Kuala Lumpur.

Hydraulic engineer



HYDEC Engineering Sdn. Bhd.
267B & C, Jalan Bandar 12, Metro 2, Taman Melawati,
53100 Kuala Lumpur.

C & S engineer



Perunding JPC Sdn Bhd
160 - 4 - 7, Kompleks Maluri, Jalan Jejaka, Taman Maluri,
55100 Kuala Lumpur.

Town planner



Konsultant Jururancang Bandar Sdn. Bhd
No 24, Lorong Maarof, Bangsar Park,
59000 Kuala Lumpur.

M & E engineer



Perunding EMS
48 - 1, Jalan 1/149D, Seri Petaling,
57000 Kuala Lumpur.

Land surveyors

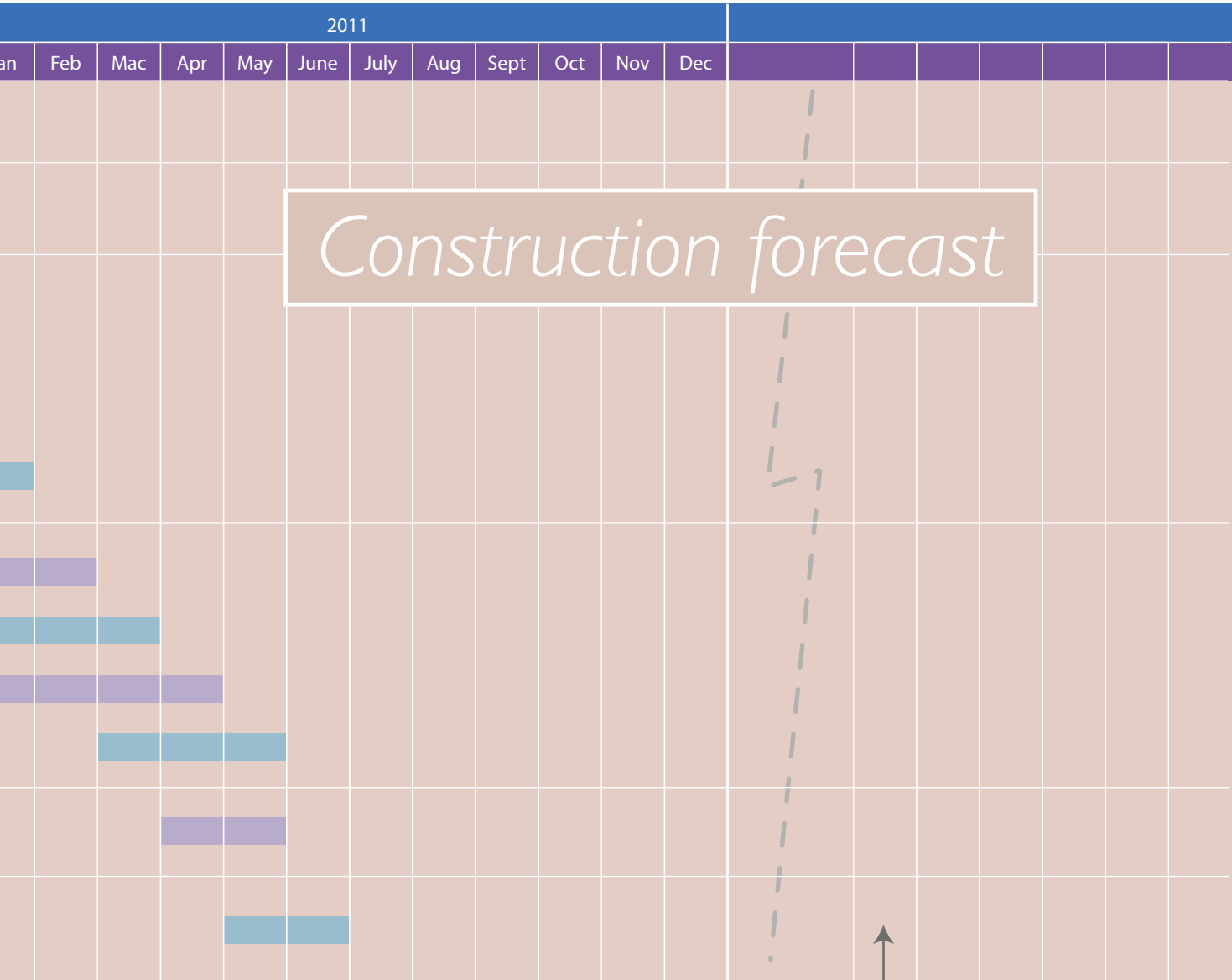


Jurukur Salaiman Land Surveyors
35-1, Jalan 3A/2B, Taman Desa Bakti,
68100 Batu Caves, Kuala Lumpur.

Eia consultant



Perunding UEP
No. 36A, Jalan Impian Emas 7, Taman Impian Emas,
Skudai, 81300 Johor Bahru, Johor.



@ 24 MONTHS (from Jan 2010 to Dec 2011)

Quantity surveyor



THL Consultants
 2 - 2 - 2, Jalan 4/50, Diamond Square, Off Jalan Gombak,
 53000 Setapak, Kuala Lumpur.

Main Contractor



Ragawang Corporation Sdn Bhd
 No. 13-2, Jalan Dagang SB 4/3,
 Taman Sg. Besi Indah, Seksyen 4,
 43300 Seri Kembangan, Selangor.

I. D. consultant



Uniterior Design & Associates
 186, 1st Floor, Aik Ann Building, Green Road,
 93760 Kuching, Sarawak.

Marketing consultants



Eastern Standard Property Consultants
 Suite 6C, 6th Floor, Man Hoo Court,
 448-452 Nathan Road, Hong Kong.

Landscape consultants



Peter Tan & Associates Sdn Bhd
 37, Jalan Damai, Off Jalan Tun Razak
 55000 Kuala Lumpur.

UK Lead Agent



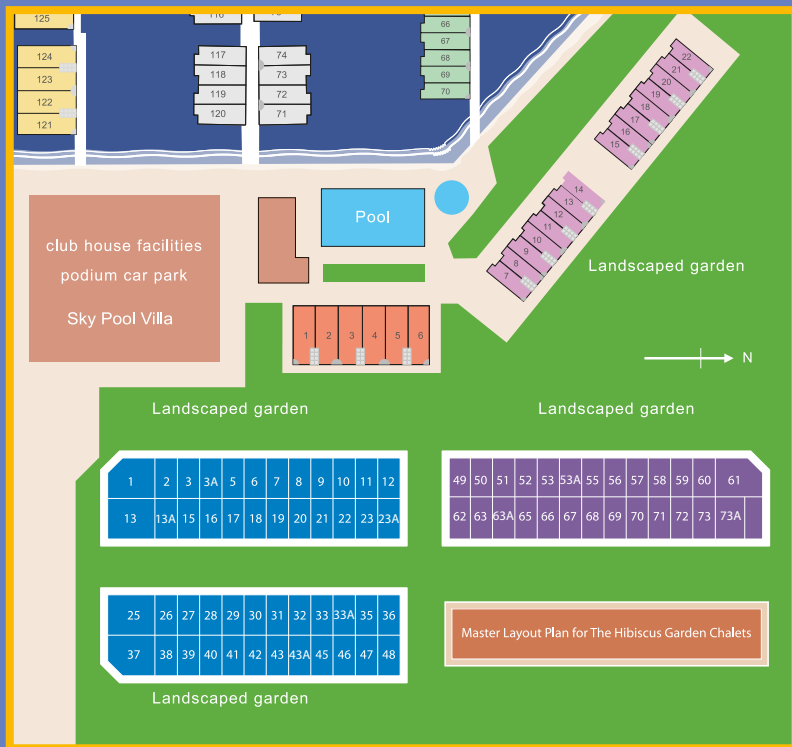
The Overseas Property Network, Superior House,
 Brook Office Park, Emerson's Green,
 Bristol BS16 7FL, England

Hotel operator

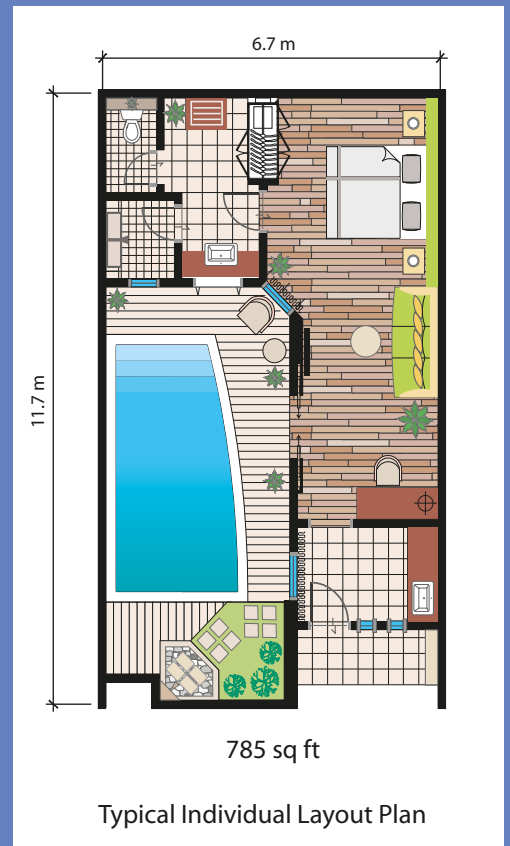


Legend Group of Hotels & Resorts
 Putra Place, 100 Jalan Putra,
 50350 Kuala Lumpur.

The Hibiscus Garden Chalets



Master Layout Plan





Piling work commences for The Hibiscus Garden Chalets



Developer

 (622637-K)

Kuala Lumpur Metro Development Sdn. Bhd.
 (a member of Kuala Lumpur Metro Group)
 Suite 8.1, 8th Floor, Yayasan Selangor Building No. 99,
 Jalan Bukit Bintang, 55100 Kuala Lumpur Malaysia.

Marketing
 Consultants


AP Assets Ltd 泛亞環球物業顧問有限公司
 Unit 1904, 19/F, Sino Plaza, 255 Gloucester
 Road, Causeway Bay, Hong Kong.

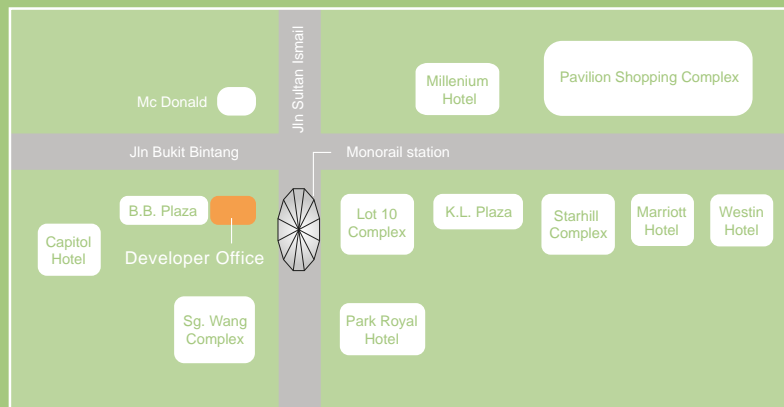
Operator


The Legend Group of Hotels & Resorts
 Putra Place, 100 Jalan Putra, 50350
 Kuala Lumpur Malaysia.



The Developer is registered with
 Real Estate & Housing Developers' Association Malaysia
 REHDA (Reg. No : HDA2200NS 0125/04)

Kuala Lumpur Head Office



TEL +603 2144 7768 FAX +603 2144 7798
 EMAIL mail@klmetropolitan.com WEBSITE www.klmetropolitan.com

Dubai office

404 Al Attar Tower , Sheikh Zayed Road P O Box 119834, Dubai , UAE
 Email : mail@klmetropolitan.com

The next quarterly circulars, for the year 2010, will be issued in , Jun , Sept & Dec 2010.

A Trusted Name : Kuala Lumpur Metro Group : the Multiple Award-winning Company



CNBC's International Property Awards
 (London) 2007

- * "Best Architecture "
- * "Best Development "



6th Asia Pacific International
 Honesty Enterprise Keris Award 2007



3rd Malaysia Business of The Year Award

- * "Emerging Entrepreneur of the Year 2008 "
- * "Superior Company "